

# The Voice



## *From the Desk of Pastor Mark:*

The season of Lent begins in March this year. It begins with what I like to call the most honest day of the year, Ash Wednesday. It is the most honest day of the year because we mark ashes on our forehead and hear the words, “Remember you are dust, and to dust you shall return.” We humans don’t like to think about our own mortality. Certainly, in our culture we like to avoid it as much as possible. We do all we can to look and feel as young as possible, as if that will stop the inevitable from happening, which is death. Yes, we “are from dust, and to dust we shall return.” Some may call this a morbid focus on death. In actuality though, it is the opposite. It is a focus on life. Acknowledging the reality of our condition allows us to more fully live. No, we aren’t going to live forever. Life is not an endless flow of time.

At some point our mortal bodies will return to the dust. So, how do we want to fully live in the meantime?

While the ashes on our forehead remind us of our own mortality, these same ashes are marked in the sign of the cross. At our baptisms we receive the sign of the cross on our foreheads with the words, “Child of God, you have been sealed by the Holy Spirit, and marked with the cross of Christ forever.” At baptism, God claims us as beloved children and promises to be with us forever. Forever means now and through eternity. These mortal bodies may give out, but we are with Christ forever. This is what frees us to live fully in the present. We acknowledge we won’t live forever, so we live fully the moments we have. We live fully without fear of messing up, without fear of not doing enough, without fear of not being good enough.

## *IN THIS ISSUE:*

- ◇ *Lenten Schedule*
- ◇ *Lenten Devotional Info*
- ◇ *Children’s Choir*
- ◇ *Blanket Sunday Update*
- ◇ *Pieces of WELCA Social*
- ◇ *Mini Me Music*
- ◇ *Semi-Annual Meeting Minutes*

## *IN EVERY ISSUE:*

- ◇ *Grimes Storehouse Donation Ideas*
- ◇ *Volunteer Sign-Up Info*
- ◇ *Stewardship Update*
- ◇ *Church Council Minutes*
- ◇ *WELCA Minutes*
- ◇ *Monthly Birthdays & Anniversaries*
- ◇ *Monthly Calendar*

## Worship Schedule

*Thank you for joining us for worship!*

Sunday worship occurs at 8:00 and 10:30 a.m.

Sunday school runs from 9:15-10:15 a.m.

Wednesday worship is at 6:30 p.m.

## YOUTH GROUP CALENDAR

*Breakfast Club* will meet March 2 at 9:15 AM.

*Middle School Youth Group* will have an Appetizer and Game night March 9 at 5PM.

*High School Youth Group* will go to Culver's March 26 at 7:30 PM.

*Mission Trip* Participants will meet March 30 at 6PM.

*Mission Trip Lenten Soup Supper fundraisers* every Wednesday at 5:30PM.

## St. Peter Lutheran Church Office Hours

**The Church Office** is open Mon.-Fri. 8:00 a.m.-1:00 p.m.

**Jill Capps** – Director of Faith Formation  
Jill's day off is Friday.

**Pastor Mark Schlenker**  
Pastor's day off is Friday.

Why? Because nothing can separate us from the love of God in Christ Jesus. (Romans 8:38-39).

Acknowledging our mortality allows us to live more fully in the present. Same goes for acknowledging the hurts, pains, and challenges in life. Acknowledging these struggles allows us to live more honestly and fully in the present with hope for a new tomorrow. Our theme for Lent this year is titled, *The Hardest Part: Hurt We Carry, Hope We Find*. We'll be exploring this theme during worship on Sundays, as well as adult bible studies on Thursday and Sundays. There is also a daily devotional you can use throughout the season of Lent following this theme. You may find the digital link to sign up using the QR code on the next page, through a link in the St. Peter weekly eNews, on our website, or on our Facebook page. There are also printed versions of the daily devotional in the entryway at church. Blessings to you as we begin this season of Lent in the church year.

Gathered to Grow. Sent to serve.

Pastor Mark

## Coming Up at St. Peter

### Lenten Worship Schedule

Ash Wednesday begins the church season of Lent. Ashes are placed on the forehead reminding us of our mortality; yet, they are placed in the sign of the cross, reminding us that we are claimed and redeemed through Christ Jesus' death and resurrection. **Join us for Ash Wednesday worship, including the Imposition of Ashes and Holy Communion, on March 5 at 6:30 p.m.**



Wednesday Soup Suppers: 5:30 p.m. March 5-April 9: Supper will be served from 5:30-6:15 p.m. each Wednesday of Lent beginning on Ash Wednesday. Soup and other dinner items will be shared for a free-will donation, which raises funds for the 2025 Youth Mission Trip to Copperhill, Tennessee.

Lenten Devotionals will be available inside the church entrance. You are welcome to take one for reading and reflection during this season of Lent.

Lenten Worship: 6:30 p.m. Wednesday Lenten worship will occur each Wednesday March 5-April 9 featuring skits performed by members of our congregation.

Choir Rehearsal will follow Lenten services at 7:15 p.m. All are welcome to join the choir! (Choir will not meet on Ash Wednesday.)



### Holy Week & Easter Schedule:

April 13: Palm Sunday Worship 8:00 & 10:30 a.m.

April 17: Maundy Thursday Worship 6:30 p.m.

April 18: Good Friday Worship 6:30 p.m.

April 20: Easter Sunday Worship 6:30, 9:00, & 10:30 a.m.

Gathered  
to  
Grow

Sent  
to  
Serve

---

The 15<sup>th</sup> of each month is the deadline date for newsletter items to be submitted to the church office.

Thanks!

---



1001 S James Street  
Grimes, Iowa 50111  
Pastor Mark Schlenker  
515-986-3077

stpeter@stpeterofgrimes.org  
www.stpeterofgrimes.org  
www.facebook.com/  
StPeterGrimes

## Lenten Study

Join us during Lent for a study called *The Hardest Part: Hurt We Carry, Hope We Find*. **Daily devotionals** will be available inside the church entrance; all are welcome to take a devotional. Thursday Bible Study and Adult Ed will discuss the **weekly group guide**. You can access the digital resources using the QR code. From the authors: "Life is this strange, tender mix, isn't it? Joy and sorrow, love and loss, heartbreak and hope, all tangled together. This year, we invite you to embrace Lent as it is—raw, honest, and tender. This is the season that asks us to stop pretending we're holding it all together. It's a time to pause, sit with what's fragile and unfinished, and let God meet us in the hardest parts of our lives."



## Blanket Project Update

Thank you to everyone who helped with our 12th Annual Fleece Blanket Project! Whether you prepped fabric, tied blankets, donated fleece, or made a monetary donation, we could not have completed the blankets without you. Together, we were able to make 210 blankets that will be donated primarily to MercyOne Hospital, with about 35 large blankets going to IHYC. This brings our 12 year total to 2,217 blankets. Gathered to Grow. Sent to Serve.

Thank you for helping us  
make 210 blankets!



Wednesday Children's Choirs Sing  
March 2 at 10:30 a.m. worship!

## Faith, Fellowship, Coffee, & Dessert

All are welcome to join the Thursday afternoon Bible study as we discuss the weekly devotional *The Hardest Part: Hurt We Carry, Hope We Find*. This relaxed Bible study meets on the 2nd and 4th Thursday of the month from 1:00 p.m. – 2:30 p.m. There is no registration required, and you can come as often or as little as your schedule allows. Contact Jill at [faithformation@stpeterofgrim.es.org](mailto:faithformation@stpeterofgrim.es.org) with any questions.

## We're Praying for You!

Have you received a prayer card from St. Peter in the mail? Our confirmation students are focusing on prayer by praying for our members every Wednesday during confirmation. Groups will pray for your household and send a card letting you know that you are in their prayers.

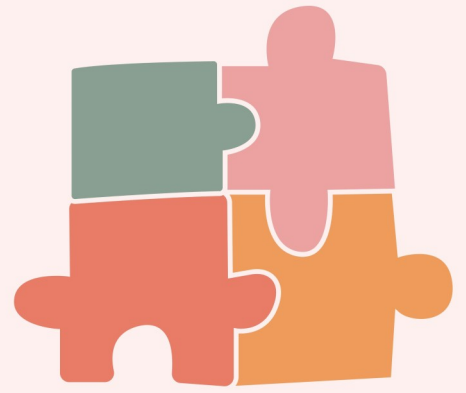
## Men's Group

Join us for our monthly Men's Group Gathering this month! Men's Group usually meets the first Sunday of the month. Contact Bradley Fasse with any questions, and join the Men's Group Facebook page for the latest updates and news. @Facebook: St. Peter Lutheran Men's Group @bradleyfasse@gmail.com @515-971-2397



# Pieces of WELCA

Join us March 30 from 2PM-4PM. This is an event for all of the women of St. Peter. Join us to learn about WELCA and to connect with others while participating in a puzzle making contest. We look forward to seeing you!



We support the Grimes Storehouse Food Pantry!

Our March focus will be:

## Canned Meats & Fish



Bring in donations of canned tuna, salmon, chicken, or beef.

Donations can be dropped off in the basket next to the Service Counter.



## Mini Me Music

Come join us for fun, musical play for children from birth to 3 years old!

St. Peter Lutheran Church in Grimes  
Sunday mornings from 9:30-10:00am



GROWING IN GOD'S LOVE! **MARCH 30**

**APRIL 27** EASTER CELEBRATION!



FOR MORE INFO, CONTACT BETH HANSEN  
[ELIZABETHMARIE01@GMAIL.COM](mailto:ELIZABETHMARIE01@GMAIL.COM)



## Volunteers Needed – Can You Help?

If you can help as a communion **preparer** contact Kaarin Fasse. To be a **communion assistant**, please contact Katie Scholl.

If you would like to help as **Assisting Minister**, please contact Emily Wells.

If you would like to be a **reader**, please contact Sue Dooley.

If you can help **host** by greeting worshippers and helping them find their worship materials, contact Rita Rosenberg.

If you want to learn our **livestream audio/visual production**, contact Jill. You would be trained in the production process for our live-stream service.

If you can help with **Creation Station** during worship, contact Jill or go to this link: <https://signup.com/go/CwrXJph>.

**The church office can put you in contact with these volunteer coordinators.** Thanks for sharing your time and talents with St. Peter!



## HIGHLIGHTS FROM THE SEMI-ANNUAL MEETING FEBRUARY 9, 2025

- Approval of agenda, June 2024 minutes, annual report, and annual audit
- Discussion to clarify the valuation of fixed assets. Valuation of fixed assets went from 1.3M to 2.2M. Max Bodermann responded and referenced the summary as provided in the Audit Committee report.
- Audit committee review presented. The committee found the financial records of the Church to be in good order and processes are efficiently working maintaining the financial records. As a follow up from YE 2023 audit letter, the Office Manager started using online bill pay for one monthly reoccurring billing. The documentation retained is transparent to review / audit. Office Manager can expand to other reoccurring billing and Council may want to provide guidance on any limitations that may help with Office Manager reoccurring bill paying efficiencies. Recommendation for Church Council to review our monthly bills with the Office Manager. Work with the Office Manager to set parameters for bills which we can classify as recurring to allow for efficiency using direct payment options.
- Audit Committee reviewed the consolidation of Fixed assets from year-end 2023 = \$1,379,392 to year-end 2024 = \$2,206,800. The change was due to:
  - Fixed assets carried roughly the same value for several years and updating the amount.
  - Working with other congregations, understanding how they valued fixed assets such as building / land / fixtures and implementing a similar valuation practice.
  - YE 2024 Fixed Assets valued based upon 90% of the county assessment. This will be evaluated annually or as the county issues another assessment.
- **Old Business:** Recognize the vital roles of our congregation members, whether as volunteers, council members, committee members, or in other capacities, in supporting the mission of St. Peter Lutheran Church. Acknowledge the importance of church staff in maintaining church operations. The health of our congregation relies on the dedication of its members.
- **New Business:**
  - 2025 Budget: Discussion on budget status, including general fund deficits throughout the year. Financial giving and pledges to the general fund through the end of December 2024 have resulted in a positive outlook for the 2024 financial year. To highlight our commitments to the budget, potential for a mid-year stewardship summary to update for status of our general fund giving. 2025 Budget approved.
  - Constitution Status & Update: St. Peter is updating and aligning our constitution with the model constitution provided by the synod. 2013 was the last time the congregation updated our constitution. More information to be provided after we receive input and response from the synod.
  - Emissary Trip update to Myamba companion congregation in Tanzania: Dave Eilers provided highlights of the trip as a continued mission that supports our relationship and relationship with our companion Myamba parish. Value to continue to give support to their ministry team, the 6 parishes (Myamba as the primary and 5 sub-parishes), Pastor and the new Pastor, the 5 evangelists and the Gonja Lutheran hospital.

## From the Stewardship Committee— Blake Franzen & Brenda Johnston

### January 2025

Income: \$22,925.54

Expense: \$29,109.24

Net loss: -\$6,183.70

### Year to Date 2025

Income: \$22,925.54

Expense: \$29,109.24

Net loss: -\$6,183.70

- General Fund—January 2025, expenses were greater than income, thus it finished with loss of \$6,183.70.

## HIGHLIGHTS FROM THE CHURCH COUNCIL MEETING FEBRUARY 13, 2025

### Pastor's Report:

- Emissary trip to Tanzania was a success. We had a full agenda for the travel. Here are the places we were able to visit:
- Mwanga school for the Deaf where St. Peter has supported 4 students.
- ELCT, Pare Dioceses main office visiting with the General Secretary.
- 3 different secondary schools where St. Peter supports scholarship students.
- 6 sub parishes of Myamba Lutheran church.
- Worship at Myamba Lutheran church on Sunday.
- Gonja Hospital, where people of Myamba would go if needed, and could make it. It is about 2 hours drive from Myamba in the mountains. St. Peter has supported various projects at Gonja Hospital.
- We were warmly received and welcomed every place we stopped. Mwanga school for the deaf, the 6 sub parishes of Myamba and Gonja Hospital all gave us tours and fed us well. Myamba sub parishes would always say, "It is our custom to welcome guests with food." Hospitality is something they do very well. The reading glasses were a hit as well. I believe we brought 175 reading glasses. Thanks to everyone for the prayers and support. I believe Emissary trips like these are important in continuing to build strong relationships.
- Weather has caused us to cancel the last two Wednesday night's activities. We hate to cancel ministries, and wait as long as possible to make the call, but better to be safe.

### Faith Formation Report—Jill Capps

- **Faith Formation:** Our Annual MLK Week of service was held on January 15th-22nd. Volunteers made 95 casseroles for the Salvation Army's Mobile Breakfast canteen. This year we had over 88 volunteers participate in the event.
- Preparations have begun for our Annual Fleece Blanket Project in February which will be held on February 23rd. Thank you to the Amazing members of the blanket committee: Allison, Amanda, Brenda, Sarah, and Mallory – this project wouldn't be possible without your help!
- The Thursday afternoon Bible study resumed on January 9th; we continue to have both members of St. Peter and

members from other churches attend this study.

- **Confirmation:** We are focusing on the Life of Jesus during the months of January – March.
- The confirmation kids made 14 breakfast casseroles for the Salvation Army. We are also starting a Prayer Cards Project. May. In February the confirmation students will tie blankets for our Annual Fleece blanket project.
- **VBS:** VBS will be held June 22nd-26th from 6pm-8pm. Our VBS Theme this year is "Road Trip – On the Go with God". Registration opens March 15.
- **Technology:** Pastor Mark's microphone is functioning well since I moved the transmitter to the front of the church. Our contract with Mediacom (internet & phones) will expire this fall, so I have been in contact with some internet providers and will share information as it becomes available.
- **Website/Facebook:** I continue to update Facebook & our website with information on upcoming events. If your committee is planning any events or would like to share anything via the website or Facebook, please let me know so I can make sure it is included – **if possible, please provide at least a few days' notice prior to when you want the event posted/communicated (especially if on a Friday/Saturday)**. Reminder that we must respect copyright restrictions on all images posted – so if you are unsure about restrictions & how to find a usable image, I can help to create an image/publicity document etc. that you can use.

### Youth Report

- Middle School YG is going well! Thank you to Jason Hughes for leading while I was on the Emissary Trip to Tanzania.
- High School YG is also going well! Thank you to Matt Schmidt for leading while I was in Tanzania.
- I held a Mission Trip Parent and Youth Meeting on January 26<sup>th</sup> to go over our upcoming fundraisers. We are busy preparing for the Valentine's Dinner which will be on Sunday, 2/16.
- Breakfast Club had 13 youth at our January meeting. Thank you to the Wager Family for providing breakfast!
- Shout out to Matt Schmidt for walking me through the Valentine's Dinner and to Katie Scholl for making new center-pieces! I appreciate you both!

## Online Giving Opportunities

St. Peter has online giving options through Thrivent's Simply Giving Program to include one-time giving and to enable members to set up their own recurring donations through the following secure methods:

1. **Phone App:** Find and download the Vanco Mobile Faith Engagement app in the App Store or on Google Play for Android smartphones by searching "Vanco mobile". Type in "St. Peter Lutheran" and choose our address in Grimes, and follow the steps.
2. **Website:** Go to St. Peter's website [www.stpeterofgrimes.org](http://www.stpeterofgrimes.org) and click on the yellow Online Giving link or scan the QR code printed here.



### **Treasurer's Report:**

- Approval of December and January financials
- Council had a follow-up discussion related to semi-annual meeting budget discussion. Discussion related to Ideas for maintaining visibility of general fund contributions throughout the year and provide current information for our ongoing monthly budget commitments.

### **Stewardship :**

- Nothing to report

### **Building & Grounds**

- Nothing to report

### **Education:**

- Blanket Sunday is coming up
- Beth is working on updating background checks for the next few months
- Emily is working on organizing our supplies for our new storage system.

### **Evangelism:**

- We had a wonderful Souper bowl lunch this past Sunday after the congregational meeting. Partnering with the Men's Group, we served approximately 50-60 members. Thank You Men's Group and all those that helped make a great lunch. Many hands make light work!!
- We continue to hold fellowship hour between services.

### **Worship & Music :**

- Lenten season begins on March 5 with Ash Wednesday. The committee is working on logistics such as ashes, setting up the cross, Lenten worship services with Holden and skits, and the possibility of a Palm Sunday donkey
- Mini Me dates to be announced
- Discussion on why we have two services rather than one on Sundays
- Discussed members who might be good candidates for hosting
- Jill gave us an update on mics. She moved the transmitter to the pulpit for now, which seem to be working better. Will continue working on other mic issues (altar mic)
- Discussion on garage storage and cleaning that out
- Discussed the following calendar of children's singing events

### Children's Singing Schedule:

- Wed, Feb 26—6:30 p.m.—Joyful Noise after practice that evening
- Sun, Mar 2—10:30 a.m.—Wednesday Choirs
- Sund, Apr 6—10:30 a.m.—Wednesday Choirs
- Sun, Apr 13—10:30 a.m.—All SS Kids
- Apr 27—10:30 a.m.—Wednesday Choirs
- May 4—10:30 a.m.—All SS Kids

### **Old Business:**

- Council – St. Peter Constitution updates - Eric submitted to Synod for review
- Audit committee review for 2024 Financials – Max

Bodermann, Matt Morris, Bradley Fasse

- Budget is finalized for Semi-Annual Congregational Meeting
- Committee Reviews in Progress – Education Committee Tasks & Timeline
- Nominating committee for next year's council contacted—Preparing for June semi-annual – 1 Exec council position (Eric to transition), Members in last year of council positions transitioning for Stewardship, Building & Grounds, Evangelism
- City of Grimes Development Services - Notice of Proposed Rezoning of adjacent land: City council to hold a public hearing on the application; tentatively scheduled for 5:30 pm, on February 11, 2025. Input.

### **New Business:**

- Insurance Policy - Quote review by Steve Schultz: Anticipating end of month to have information provided to insurance contacts for other quotes. Information gathered is complete and can provide to contacts for quote review.
- Nominating committee - status: Nominating committee (Heidi Ridnour, Tammy Pugh, Monti Miller) met on Sunday with Pastor Mark on Sunday in between services and will meet again in the next month. Goal is to be ahead of time with seeking others to fulfill open council roles.
- Committees plan to update roles & responsibilities each year before Council Retreat: Agreement for council committees to complete an annual review of roles & responsibilities documents to keep them current.

**Local Mission Donation:** Grimes Hunger Fight/ Meals from the Heartland

### **HIGHLIGHTS FROM THE WELCA MEETING**

**FEBRUARY 18, 2025**

- Welcome to new board members
  - WELCA yearbook is being updated by Stephanie and Heidi
  - Baptism supplies have been transitioned to Stephanie
  - Financial Update: current balance 2024 was \$9382.15
  - Review of 2024 budget to actual expenses
  - Approved 2025 budget
  - Discussion: funds to revamp the front entry have been requested
  - Will donate \$150 to the blanket drive
  - New/Used Toy Drive—extend to March 5
  - Craft fair: discussed logistics of number of booths, cost per booth, and WELCA volunteer support for taping and front entrance. There will be no trailer spots or kitchen access. Refunds will be given with one month's notice. Beth is taking deposits and will make one payment to WELCA when they are in. Facebook page has been created
  - Subscriptions: Kerry will review order timeline with Michelle
  - Pieces of WELCA: March 30, 2-4p.m.
- Next meeting March 18th at 6:30 p.m. at the church